

EUROPE RESETTLEMENT



© UNHCR/Bruno Galan Ruiz

The Dabah family have breakfast at their home in Lisbon, Portugal. Syrian refugees who used to own a restaurant in Damascus, they were forced to flee the country after the breadwinner of the family was killed. After fleeing to Egypt where they spent 9 months surviving off donations from local charities, the family was resettled in Europe.

Overview

Between 1 January and 31 July 2017, 25,556 refugees were submitted by UNHCR for resettlement¹ to 22 countries in Europe,² only 11% less than the total for 2016 and already 130% more than the average rate of 11,100 submissions per year during the last decade.

Between 2006 and 2016, Europe's proportion of resettlement submissions globally has increased from approximately 13% to more than 18%, and in 2017 is currently far higher (57%). This is primarily due to a significant decrease globally in new submissions for resettlement, most notably to the United States of America.

Resettlement cases were most commonly submitted based on legal and physical protection needs (46%), to protect survivors of torture and/or violence (26%), and to protect children and adolescents at risk (16%). For nationalities other than Syrians (16% of submissions overall), fewer cases were submitted due to legal and physical protection needs or to protect survivors of torture and/or violence (23% and 17% respectively), while more cases to protect women and girls at risk and the lack of foreseeable alternative durable solutions (24% and 12% respectively) were submitted than for cases relating to Syrians. Overall, just 1% of cases were under the emergency submission procedures,⁵ while 7% were urgent.

As of the end of July 2017, 4,798 resettlement cases (20,776 individuals in total) were processed by European countries. 92% of these were accepted, consistent with acceptance rates in previous years.

Resettlement submissions to Europe

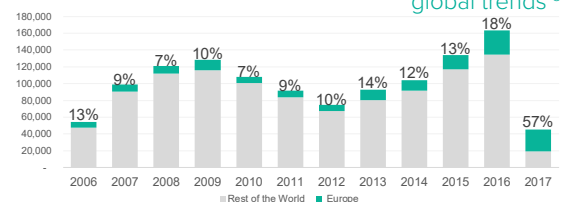
25,556
in 2017³

17,209 in 2015 **28,651** in 2016

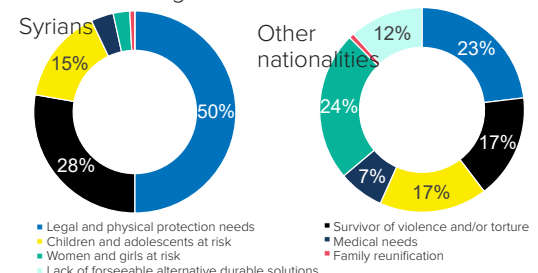
Resettlement arrivals to Europe⁴

11,175 in 2015 **18,175** in 2016

Resettlement submissions to Europe compared to global trends³



Categories of resettlement submissions



¹ See <http://www.unhcr.org/resettlement.html> for more information on the background to resettlement. Only data on resettlement cases facilitated by UNHCR is available for 2017. The statistics relate to the submission of the resettlement case to the prospective country of resettlement. It can be several months before a case is accepted and the refugees depart their country of asylum and arrive finally in the country of resettlement. A demographic breakdown of the resettlement submissions is not currently publicly available.

² Europe comprises 50 countries, including the EU, Norway, Switzerland, Iceland and Liechtenstein, the Balkans (inc. Kosovo (S/RES/1244(1999))), Turkey and Eastern Europe (exc. Kazakhstan).

³ Source: Resettlement submission data from rsq.unhcr.org

⁴ Sources: Resettlement data from Eurostat for the EU and Norway, Switzerland, Iceland and Liechtenstein and rsq.unhcr.org for Eastern Europe and the Balkans; Statistics for 2017 are not yet available.

⁵ See section 6.11 (Resettlement priority levels) on page 246 of the [UNHCR Resettlement Handbook](#)

Country of origin

The vast majority of refugees submitted for resettlement in Europe in 2017 are from Syria (21,369 or 84%), followed by Eritrea (907 or 4%), the Democratic Republic of the Congo (652 or 3%), Somalia (619 or 2%) and Sudan (473 or 2%). In total, 94% of refugees submitted for resettlement in Europe in 2017 originate from one of these five countries. The resettlement of Syrians to Europe has increased significantly in scale between 2013 and 2016.

9% of submissions to Europe are from East Africa and less than 1% of submissions to Europe are from West Africa.

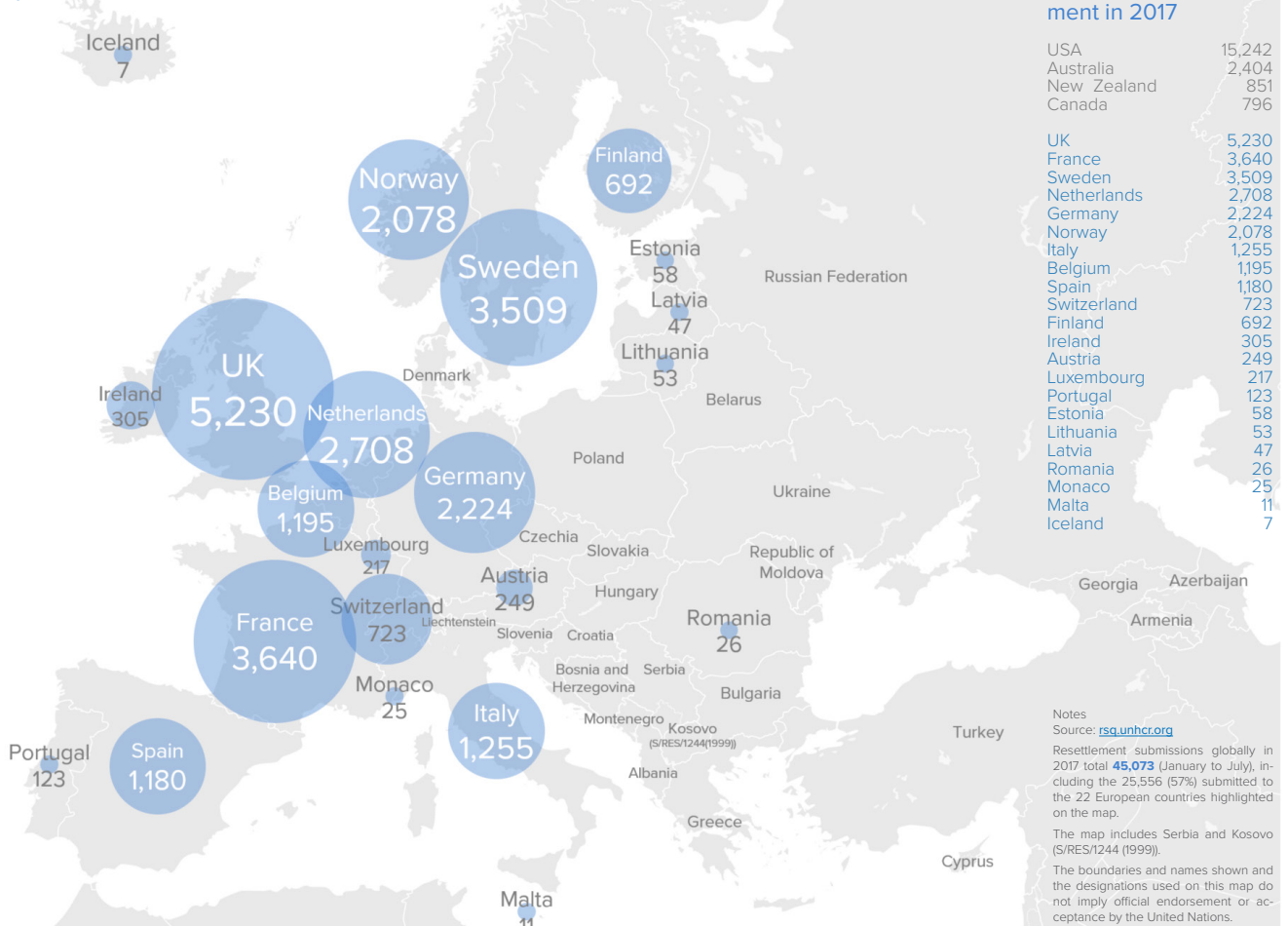
Country of asylum

Refugees submitted for resettlement in Europe were most commonly initially registered in the following countries of asylum: **Syrians**: Turkey, Lebanon or Jordan; **Eritreans**: Sudan; **Congolese (DRC)**: Uganda and Burundi; **Somalis**: Kenya.

Country of resettlement

The countries in Europe who have so far received the most submissions for resettlement in 2017 are the UK (5,230 or 20%), France (3,640 or 14%), Sweden (3,509 or 14%), Netherlands (2,708 or 11%), Germany (2,224 or 9%) and Norway (2,078 or 8%) and in total constitute 76% of the resettlement admissions to Europe.

Number of refugees submitted for resettlement by country in Europe

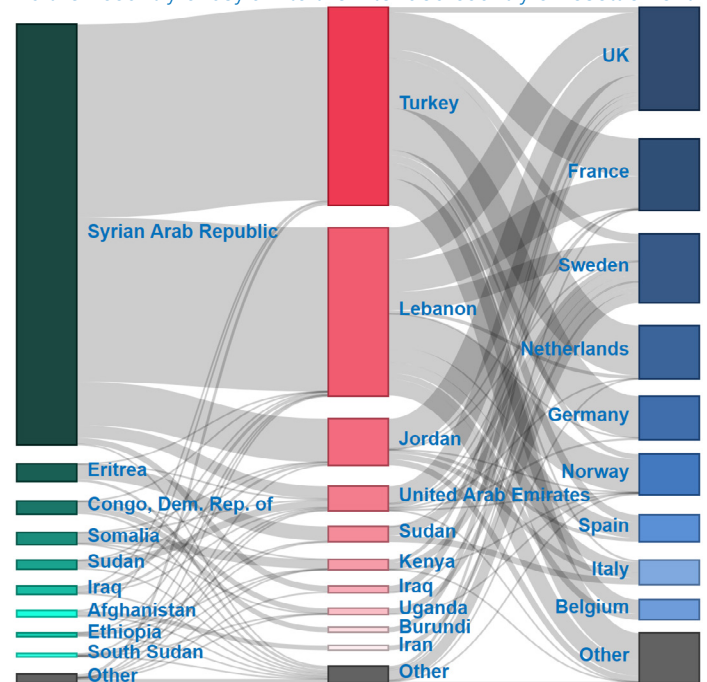


Number of individuals submitted for resettlement in 2017

USA	15,242
Australia	2,404
New Zealand	851
Canada	796
UK	5,230
France	3,640
Sweden	3,509
Netherlands	2,708
Germany	2,224
Norway	2,078
Italy	1,255
Belgium	1,195
Spain	1,180
Switzerland	723
Finland	692
Ireland	305
Austria	249
Luxembourg	217
Portugal	123
Estonia	58
Latvia	47
Lithuania	53
Belarus	
Poland	
Czechia	
Slovakia	
Hungary	
Romania	26
Bulgaria	
Ukraine	
Republic of Moldova	
Georgia	
Azerbaijan	
Armenia	
Turkey	
Cyprus	
Malta	11
Iceland	7

Notes
 Source: rsa.unhcr.org
 Resettlement submissions globally in 2017 total **45,073** (January to July), including the 25,556 (57%) submitted to the 22 European countries highlighted on the map.
 The map includes Serbia and Kosovo (S/RES/1244 (1999)).
 The boundaries and names shown and the designations used on this map do not imply official endorsement or acceptance by the United Nations.

Flow of refugees submitted for resettlement from country of origin, via their country of asylum to the intended country of resettlement



Most countries in Europe with active resettlement programmes resettled Syrians (16 of these 22 countries in Europe admitted at least 90% Syrians for resettlement). Only Sweden and the UK have resettled significant numbers of other nationalities of refugees, including from Eritrea, the Dem. Rep. of the Congo and Somalia.